



The Forest Heights SC28653A

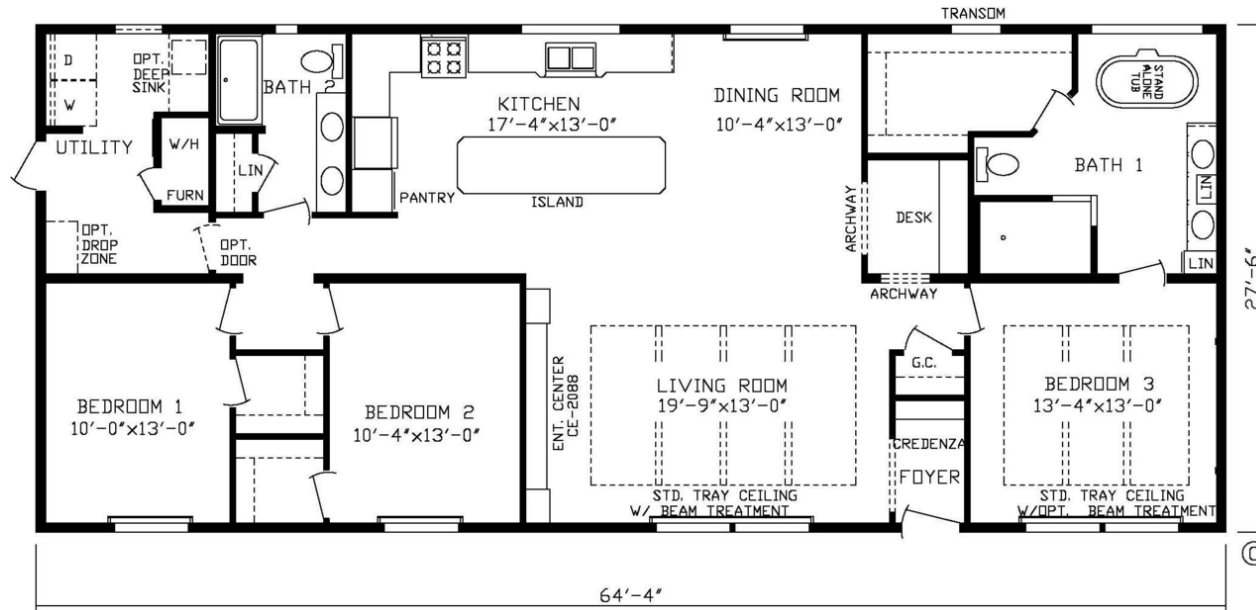
3 Bedrooms, 2 Bathrooms, 1760 Square Feet

Series: Showcase (MW)

Home Type: Manufactured

Sections: Double-wide

Floor Plan



© 2019 Friendship Homes.
friendshiphomesmn.com

*IMPORTANT: Because we continuously update and modify Friendship Homes products it is important for you to know that our brochures and literature are for illustrative purposes only. All information contained herein may vary from the actual home we build. Dimensions are nominal and length and width measurements are from exterior wall to exterior wall. The right is reserved to make changes at any time, without notice or obligation, in prices, colors, materials, specifications, features and models. Please check with your retailer for specific information about the home you select. (Add approximately four feet to determine transportable length.)

SHOWCASE SECTIONAL STANDARDS

General:

Recessed Frame
 Cross-Members/Out-Riggers- 4' O.C.
 Energy Heel Truss Rafters
 Energy Truss Rafters – 24" O.C
 8' Flat Ceiling
 Heavy 10" Steel I-Beam Frame
 Double Marriage Wall – 6"
 Tranverse Floor Joists – 16" O.C.
 2X6 Exterior Wall Studs – 16" O.C.
 In Floor Cross-Over Heat Ducts
 Unitized Floor/Wall Construction
 With Steel Straps – 4' O.C.
 Glued & Screwed Flooring System
 Seamless Bottom Underlayment
 (Nylon Re-Inforced)
 3/12 Roof Pitch
 Tongue & Groove OSB Floor Decking

Furnace:

Gas furnace w/Electric Ignition
 Perimeter Heating
 Positive Operating System
 Insulated Heat Ducts

Carpet:

Shaw 16 oz. Carpet w/Tack Strip
 5lb Carpet Pad
Beauflor Roll Goods



Electric:

100 Amp
 Wire & Brace for Fan - Liv Rm & BR's
 LED Can Lights
 Wire & Vent For Dryer
 Exterior Recept on Sidewall
 Earthen Light At Front & Rear Doors
 Smoke Alarms

Plumbing:

Plumb for Washer
 40 Gallon Dual Element
 Electric Water Heater
 Water Shut-off Valves Thru-out
 Stainless Steel Farmers Sink-Kitchen
 Metal Faucets
 Hi-Arc Kitchen Faucet

Baths:

Exhaust Fan w/Light MBA
 36" High Bath Lavs
 Fiberglass Tubs
 Porcelain Bath Lavs
 Framed Bath Mirrors
 Furniture Style Bath Lavs

Insulation:

R-11 Insulation in Floor
 2 x 6 Sidewalls with R-19
 R-21 Available
 R-25 Insulation in Ceiling
 R-33,44, or 50 Available
 Foam Gasket at Marriage Line

Cabinetry:

Vintage Shaker Cabinet Doors
 Hardwood Stiles w/Concealed Hinges
 Self-Edge Countertop Edge
 Seamless Countertops
 Cabinet Over Refrigerator
 Shelf in Washer/Dryer Area
 Center Shelf in Kitchen Cabinets
 Roller Guide Drawer System
 40" Cabinets in Kitchen
 Drawer Bank in Kitchen
 Entertainment Center (Per Print)
 Drawers Above Cabinet Doors
 Full Wall Backsplash in Kitchen
 Paneled Backs on Cabinets
 Drawers above Base Cabinet Doors
 Laminate Backsplash in Baths

Décor:

Stippled Ceiling
 Venetian Blinds Throughout
 Cornice Boards Window Treatment
 Tape & Textured Walls
 Vintage Wrapped Trim
 Double Shelving in MBR Closet
 Tray Ceiling w/Beams in Liv Rm
 Tray Ceiling in MBR
 Wire Shelving in Closets
 Ceiling Treatment w/2 can Lights in Din Rm

Exterior:

ROYAL
Royal Double 4 Dutch Lap Vinyl Siding
 7/16 OSB Exterior Sheathing
 Exterior Accent Treatment
 Lineals on DS
 Energy Seal Windbreaker
Owens Corning Shingles with
 25 Year Warranty
 Dormer



Doors:

3 Hinges on Interior Doors
 Full Door Stop Molding
 Brushed Nickel Door Knobs
 34 x 82 9 Lite Rear Door W/Storm
 38 x 82 Decorator Front Door W/Storm
 Keyed Alike Locksets
 White 6-Panel Interior Doors
 Metal Furnace Door
 Water Heater Panel with Cubbies (per Print)

Windows:

Kinro 72" Vinyl Windows
 Pella Optional



Appliances:

Stainless Steel 18 CF 2-Door Refrigerator
 Stainless Steel 30" Gas Range w/Elec. Ignition
 Euro Style Range Hood



* Friendship Homes prides itself in continuous improvement to ensure the highest quality. Products, standards and specifications are subject to change without notice



A Family of Housing Companies, Housing America's Families.
 815 Budd Road, Montevideo, MN 56265
www.friendshiphomesmn.com